



**Panache  
Technohub**  
empowering digital transformation



## COMPANY PROFILE

[www.panachetechnohub.co.ke](http://www.panachetechnohub.co.ke)  
[info@panachetechnohub.co.ke](mailto:info@panachetechnohub.co.ke)  
+254 714 227 732





# OUR COMPANY

## YOUR ONE STOP SHOP FOR ICT-DRIVEN BUSINESS SOLUTIONS:

We are an ISO-certified ICT systems and solutions provider, specialising in the supply, implementation, training, and support of various technologies including but not limited to ERP and CRM Systems, Mobile and Web Applications, Self-service Portals,

Payment Gateways, System Integrations, Business Intelligence Reporting Tools, Cloud Solutions, and other custom Solutions in the region with a primary role to enhance business performance, facilitate growth, profitability, and efficiency.

## Stats

1	Direct & Joint Venture ( Happy clients)	100+
2	Successful Deployments (Completed projects)	500+
3	Qualified Team (Skilled Staff)	113
4	Hours of Support (Onsite/Offsite)	25K



## SERVICES

- ERP Solutions
- CRM Solutions
- Self Service Portal
- Bulk SMS
- Customized Software Solutions
- Mobile App Solutions(Android, Windows Mobile and IOS}
- Cloud Solutions( Azure, AWS, Google Cloud and Huawei Cloud)
- Alternate Channels (CBS, Mobile Banking, USSD, API Integrations.)
- Software Licenses ( Microsoft 365)



## DIVERSE ECOSYSTEMS

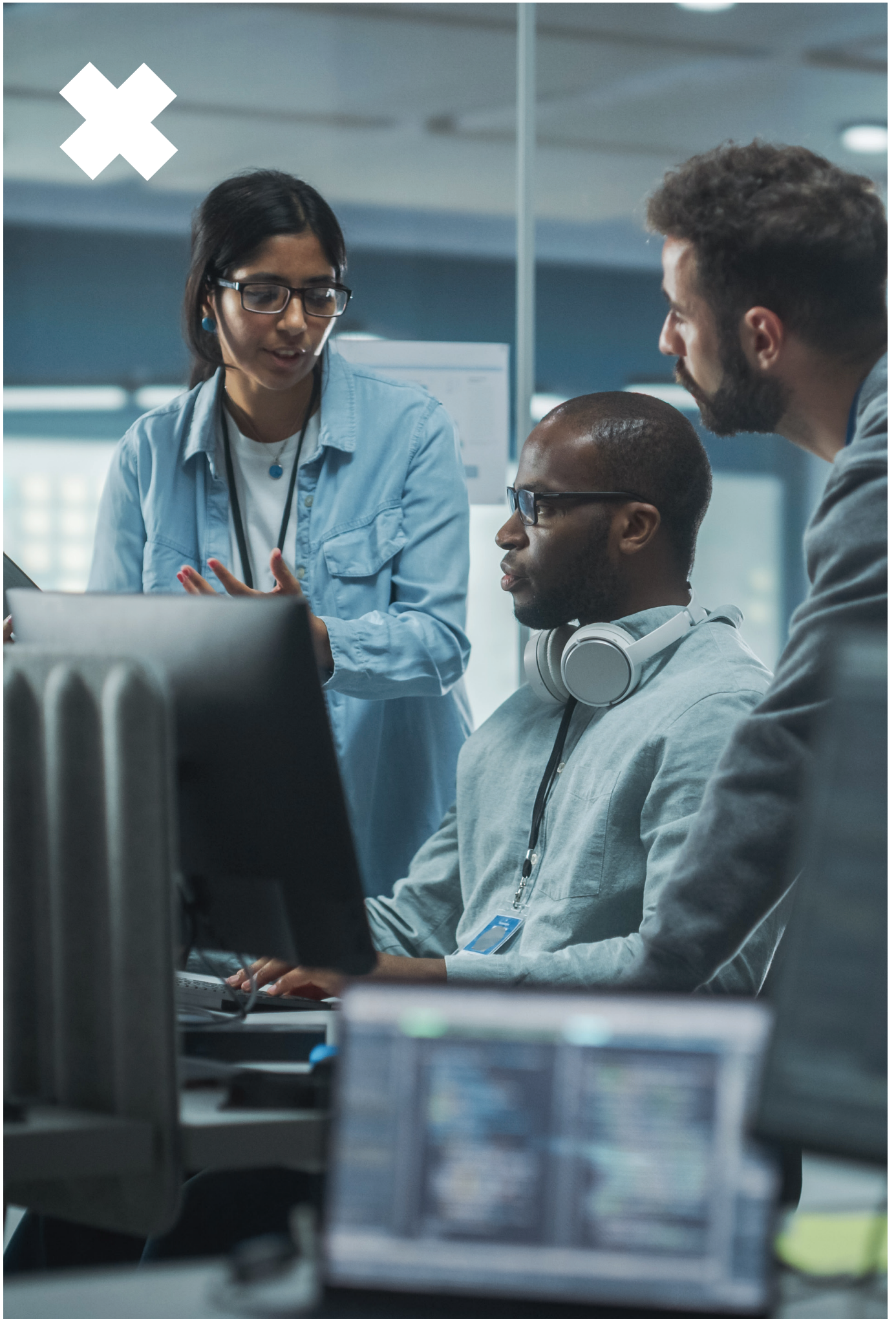
At Panache TechnoHub, we have established a strong presence across 6 countries, successfully executing over 500 implementations. With a dedicated team of 50+ employees, we specialize in providing innovative software solutions, licenses, systems, and tailored solutions to a diverse range of industries, including airlines, NGOs, parastatals, the private sector, real estate, and hospitality. Our expertise helps organizations optimize their operations and drive efficiency in today's dynamic business landscape.



## OUR AFFILIATES









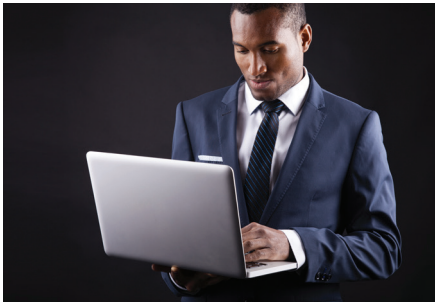
# OUR SERVICES

WE DELIVER BUSINESS VALUE IN A COST-EFFECTIVE WAY.



## Business Applications and System Integrations

- ERP's
- CRM's
- SCM's
- HRMS
- ESS Platforms
- Business Intelligence Platforms
- Document Management Systems
- E-commerce Platforms



## Infrastructure, Security, Telecommunications, and Networking

- Managed Services
- Fixed Cablings
- Enterprise Service
- Cloud Security
- Data Centre Services



## Software Development

- Portals
- Content Management Tools
- Dashboards
- Mobile Apps



## Project Management

- IT Consultancy
- Business Continuity Plan
- Project Management
- Business Process Automation
- Enterprise Application Integration Services
- Managed IT Services





# WHAT WE DO

SOME OF OUR PRODUCTS, SERVICES & PORTALS



## Panache Comms

- Bulk SMS Gateway:
- USSD Services
- Voice Solutions
- Airtime & Data Distribution
- AI Chatbots:



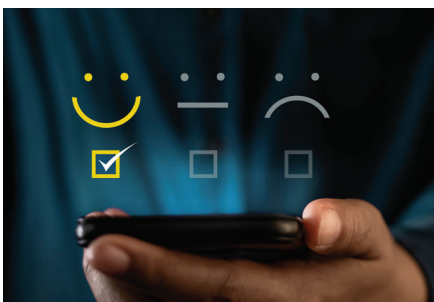
## Panache Digitims

- KRA eTIMS
- Bank and Mpesa.
- Fintech Integrations
- Core Banking Solutions:.
- Web & Mobile Banking:



## Panache-Digi-Hub

- Digital Market Place Platforms
- Fleet Management Systems
- AI-Powered Predictive Analytics
- Project Management Tools
- Work-Flow Automation Tools



## Other Products

- Trainings





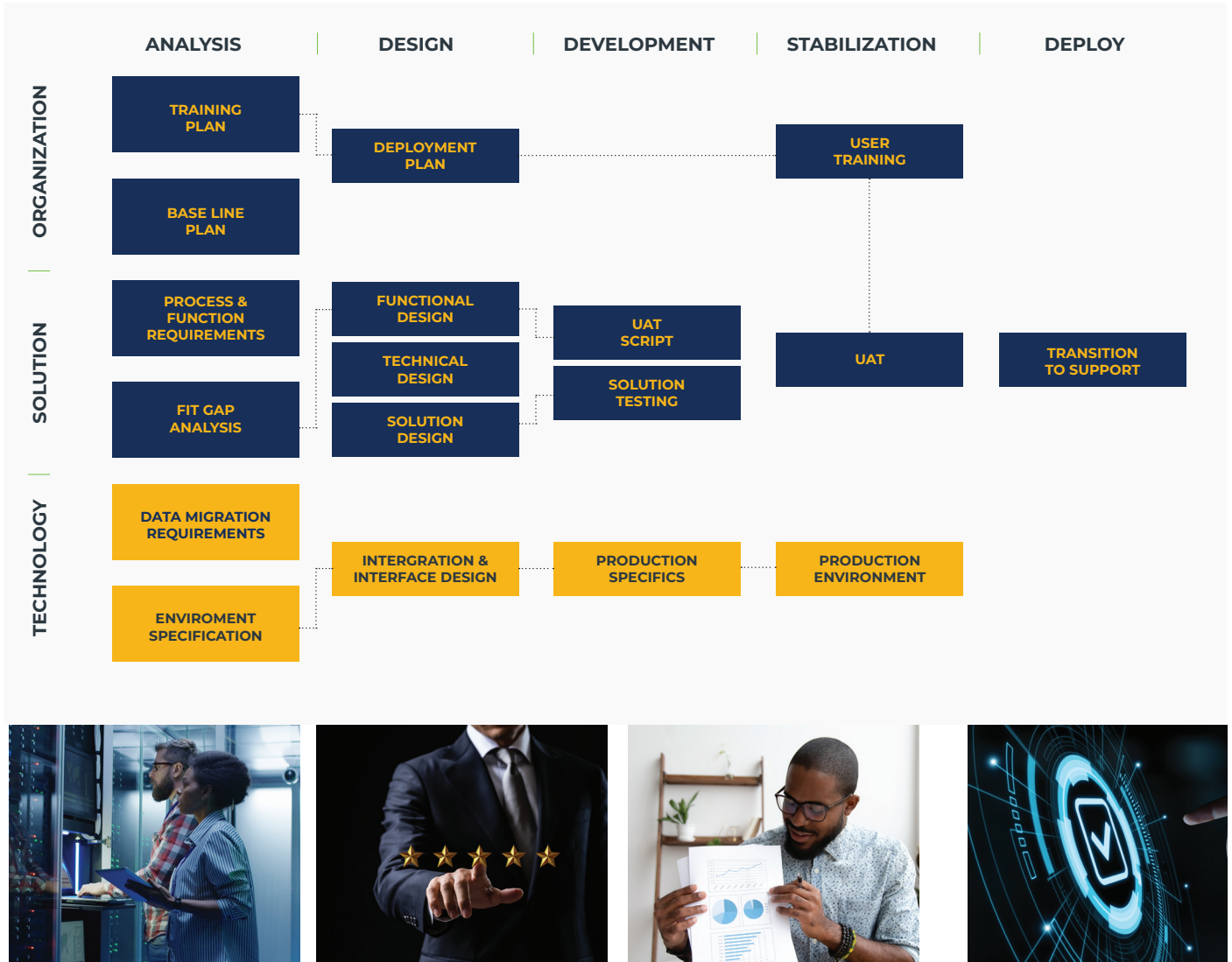
## SERVICE HIGHLIGHTS

SERVICE	SERVICE	SERVICE	SERVICE
EXPERT SUPPORT	DATA SERVICE OFFERING	IMPLEMENTATION EXPERTISE	CLOUD SERVICE PARTNER
<ul style="list-style-type: none"><li>• 24X7 SUPPORT AVAILABILITY</li></ul> <hr/> <ul style="list-style-type: none"><li>• MONTHLY REPORTS ON MANAGED SERVICE</li></ul> <hr/> <ul style="list-style-type: none"><li>• EXPERT CONSULTANTS &amp; COMPREHENSIVE SOLUTIONS TO ALL OUR CLIENTS NEEDS</li></ul>	<ul style="list-style-type: none"><li>• INTEGRATION SERVICES</li></ul> <hr/> <ul style="list-style-type: none"><li>• ANALYTICAL PLATFORM PREPARATION AND DATA INGESTION FROM VARIOUS DATA SOURCES</li></ul> <hr/> <ul style="list-style-type: none"><li>• ANALYTICS AND DASHBOARDS ENABLE PROACTIVE DATA PLANNING.</li></ul>	<ul style="list-style-type: none"><li>• DEEP EXPERTISE IN ALL THE IMPLEMENTATIONS, TOOLS, AND PLATFORM.</li></ul> <hr/> <ul style="list-style-type: none"><li>• PROJECT MANAGEMENT AND SUPPORT SERVICES.</li></ul>	<ul style="list-style-type: none"><li>• MULTI-CLOUD CAPABILITY FOR ENTERPRISE CUSTOMER APPLICATION SYSTEM MANAGEMENT AND SUPPORT.</li></ul> <hr/> <ul style="list-style-type: none"><li>• HELPING CUSTOMER IN ALL LEADING CSP (AWS, AZURE, HUAWAI, ORACLE)</li></ul>

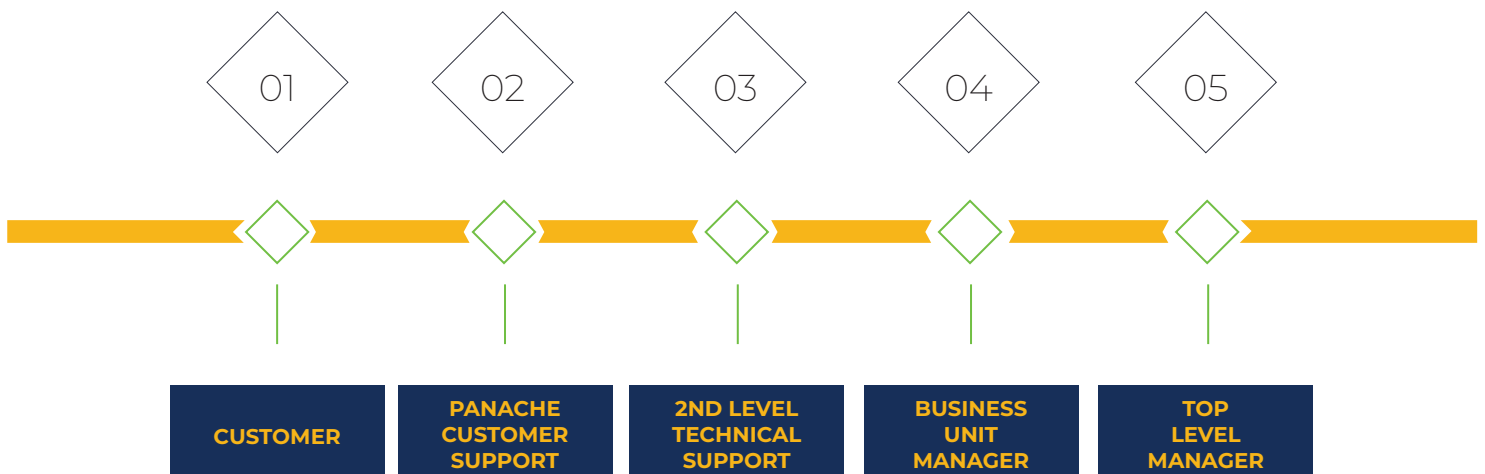
## PROJECT IMPLEMENTATION



## CAPACITY STATEMENT



## ESCALATION MATRIX





A photograph of a Black man and woman in professional business attire. The man, on the right, is wearing a dark blue suit, a white shirt, and a blue tie with white polka dots. He is holding a silver tablet and looking at it with a smile. The woman, on the left, is wearing a light blue blazer and has her hair in a natural afro. She is also smiling and looking at the tablet. The background is a blurred, modern interior space.

## OUR TECHNOLOGY FOCUS

At Panache Technohub Limited, we specialize in delivering impactful, AI-powered ICT-Driven Business solutions across all sectors, driving digital transformation and efficiency for businesses throughout the region.

# OUR VENDORS

THE COMPANIES WE WORK TOGETHER WITH

## INFRASTRUCTURE



## SECURITY



## CLOUD & TECHNOLOGY









# Let's have a conversation

We are social, you can reach out to us 24/7  
info@panachetechnohub.co.ke or via our social media channels.



SEE OUR ONLINE PRESENCE  
@ **PANACHE-TECHNOHUB**

WEB:  
panachetechnohub.co.ke

PHONE:  
(+254) 714 227 732

ADDRESS:  
Westpark Towers, Mpesi Lane,  
Off Muthithi Road,  
8th Floor, Office Suite 1.